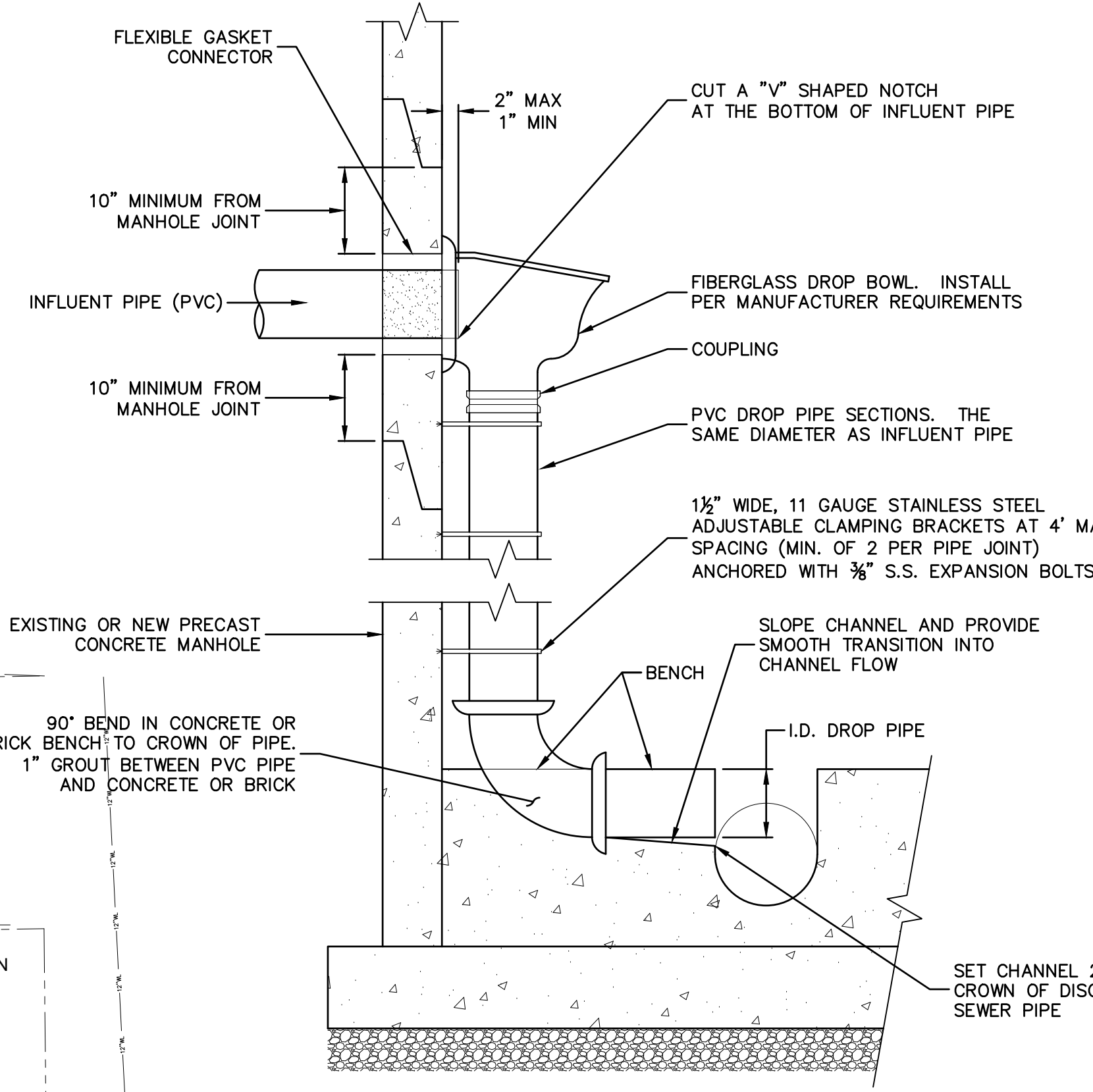
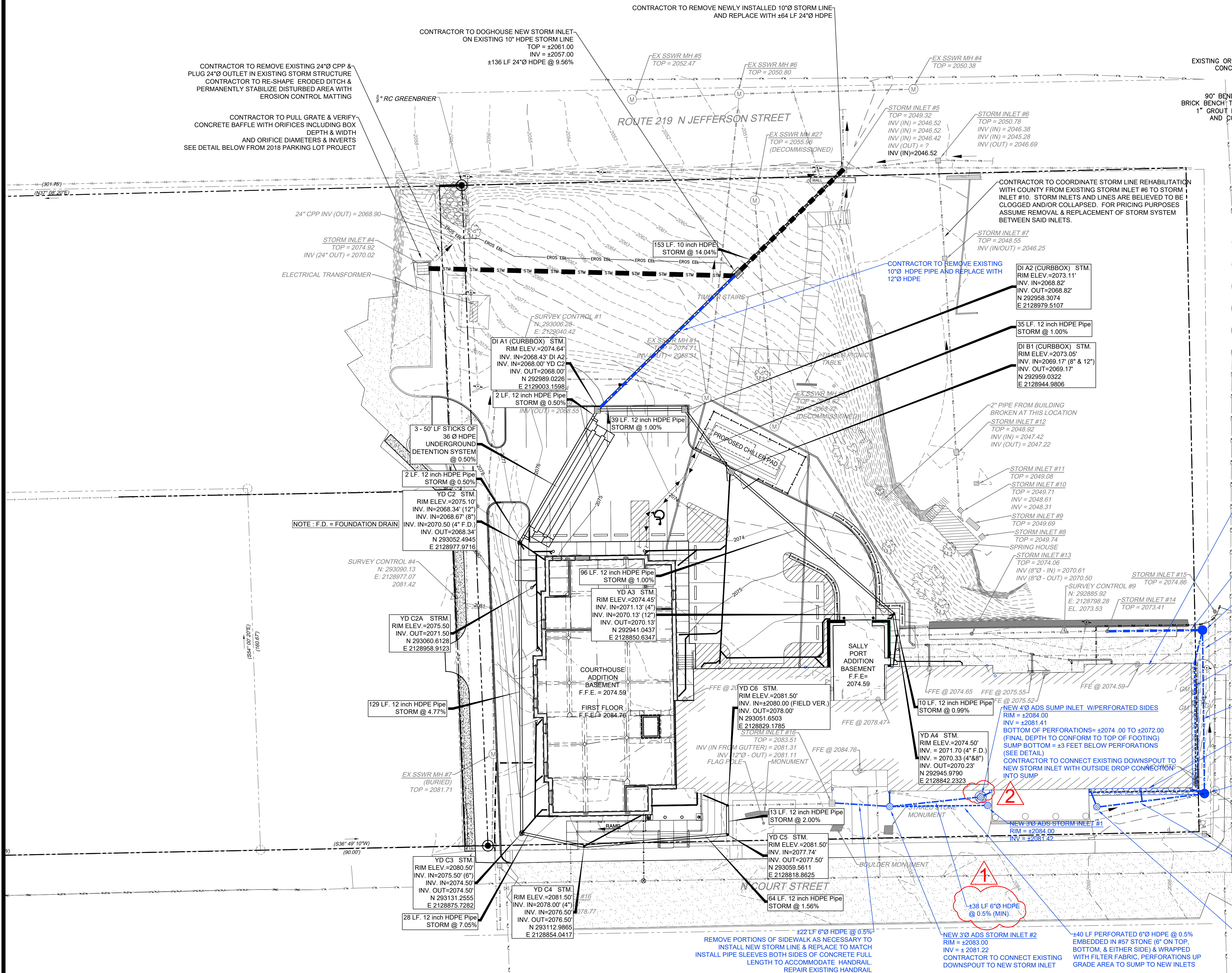
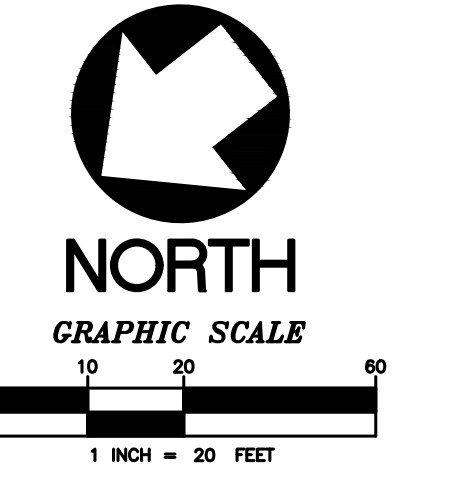


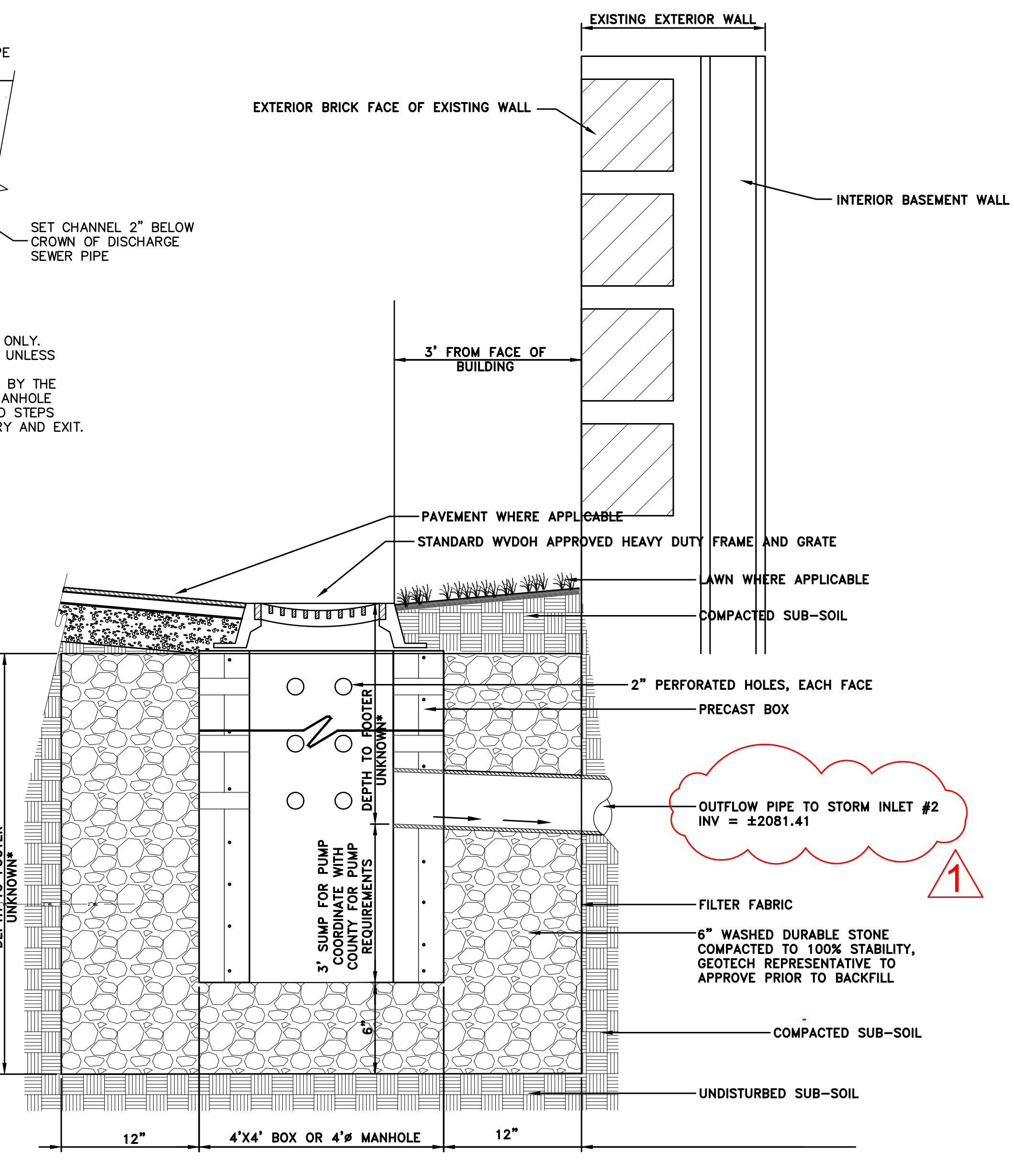
ONLY WORK SHOWN IN BLUE ASSOCIATED WITH THIS PROJECT.
 ALL OTHER STORM DRAINAGE INFORMATION SHOWN HEREIN IS FROM EXISTING CONDITIONS
 SURVEY & COURTHOUSE ANNEX PROJECT.

CALL BEFORE YOU DIG.
 DRILL OR BLAST!
 WEST VIRGINIA LAW REQUIRES 48 HOURS NOTICE FOR CONSTRUCTION PHASE AND 10 DAYS IN DESIGN STAGE. MISS UTILITY OF WEST VIRGINIA, INC. 1-800-245-4848



NOTES:
 1. THIS DETAIL MAY BE USED FOR CONNECTIONS TO PRECAST MANHOLES ONLY.
 2. ONLY ONE INSIDE DROP CONNECTION PER MANHOLE WILL BE ALLOWED, UNLESS OTHERWISE INDICATED ON THE DRAWINGS.
 3. THE DROP BOWL SHALL NOT EXTEND INTO THE AREA THAT IS DEFINED BY THE PROJECTION OF THE MANHOLE ENTRANCE VERTICALLY DOWN TO THE MANHOLE BOTTOM. IF NECESSARY, MANHOLE FRAME COVER, ONE SECTION AND STEPS SHALL BE REMOVED AND PLACED TO ALLOW FOR UNOBSTRUCTED ENTRY AND EXIT.

MANHOLE INSIDE DROP CONNECTION DETAIL
 NOT TO SCALE



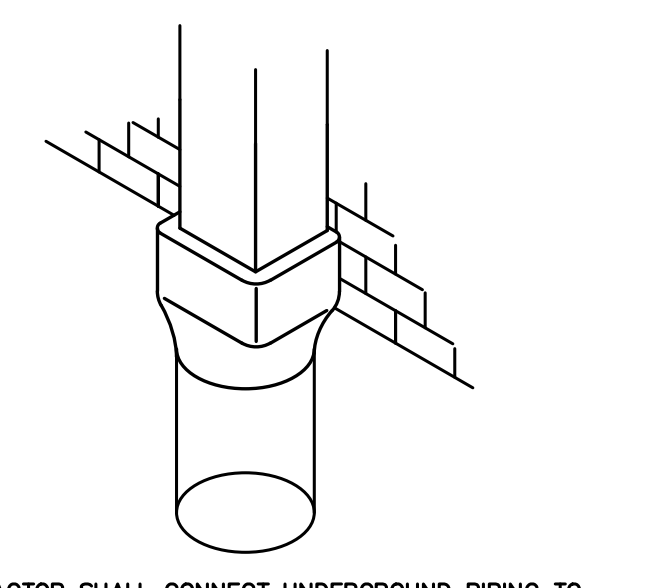
PERFORATED SUMP INLET
 NOT TO SCALE

GENERAL NOTES:
 A. SURVEY PREPARED BY TERRADON CORP., 1687 NORTH JEFFERSON STREET, LEWISBURG, WV 24801. PHONE: 304-645-4656. CONTACT: PHIL REED.
 B. THE CONTRACTOR IS SPECIFICALLY CAUTIONED THAT THE LOCATION AND/OR ELEVATIONS OF EXISTING SUBSURFACE UTILITIES AS SHOWN ON THESE PLANS ARE BASED ON INFORMATION OBTAINED FROM VARIOUS SOURCES. THIS INFORMATION IS NOT TO BE RELIED ON AS EXACT OR COMPLETE. IT SHALL BE THE RESPONSIBILITY OF THE CONTRACTOR TO VERIFY THE LOCATION OF ALL EXISTING UTILITIES. ANY CONFLICTS WITH INFORMATION SHOWN ON THESE PLANS SHALL BE BROUGHT TO THE ATTENTION OF THE OWNER AND THE ENGINEER IMMEDIATELY.
 C. ALL DIMENSIONS ARE TO FACE OF CURB OR TO FINISHED FACE OF PAVEMENT UNLESS NOTED OTHERWISE.
 D. CONTRACTOR TO TAKE ALL PRECAUTIONS NECESSARY TO DRAIN SUBBASE GRADES FROM PONDING WATER, SUCH AS TEMPORARY RELIEF CULVERTS, TEMPORARY DRAIN OPENINGS IN CATCH BASINS, AND NECESSARY PUMPING.
 E. ALL RADI ON PAVEMENT CORNERS SHALL BE 2'-0" UNLESS OTHERWISE NOTED.
 F. RELOCATION/ABANDONMENT, AND/OR DAMAGES TO EXISTING UTILITIES ENCOUNTERED DURING CONSTRUCTION IS THE RESPONSIBILITY OF THE CONTRACTOR AND ALL ASSOCIATED COSTS SHALL BE PAID FOR BY THE CONTRACTOR.
 G. NEW CONCRETE SIDEWALKS SHALL BE 4" THICK, 4500 PSI PORTLAND CEMENT CONCRETE WITH 1" DEEP (1/8" RADI) GROOVE JOINTS (C.J.) AND 1/2" EXPANSION JOINTS (E.J.) AT INTERVALS INDICATED ON THE PLAN AND ABUTTING ALL RIGID STRUCTURES. EXPANSION JOINT SPACING SHALL NOT EXCEED 30'-0".
 H. ALL EXISTING UTILITIES WITHIN THE LIMITS OF DISTURBANCE THAT ARE TO REMAIN SHALL BE PROTECTED AND KEPT IN SERVICE.

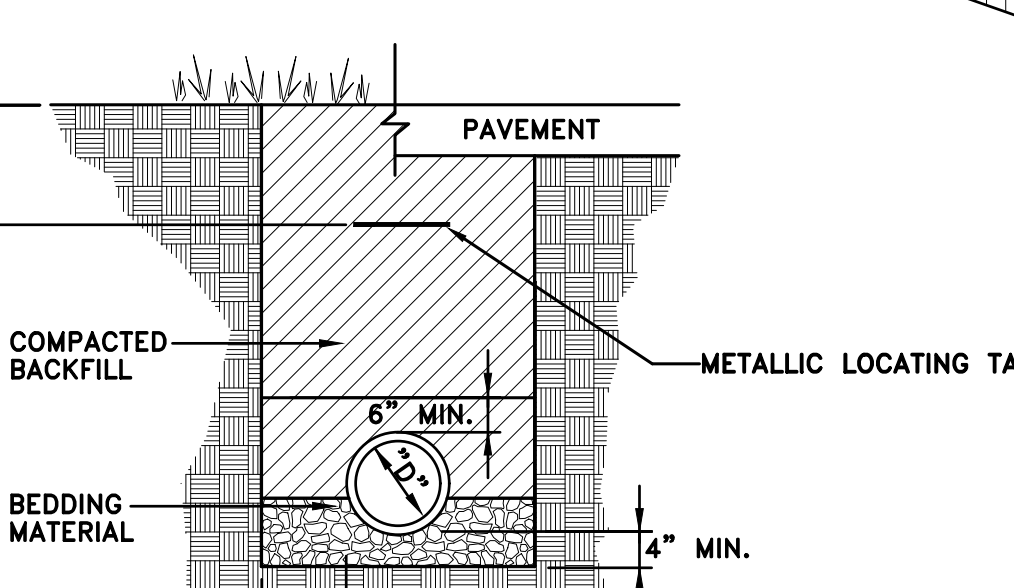
GENERAL UTILITY NOTES:
 A. ALL NEW UTILITY RUNS ARE TO BE STUBBED 5' FROM BUILDING ENTRY POINT.
 B. CONTRACTOR IS RESPONSIBLE FOR COORDINATION AND INSTALLATION OF SANITARY LINE CONNECTION TO EXIST. MANHOLE W/ LEWISBURG PUBLIC WORKS.
 C. CONTRACTOR IS RESPONSIBLE FOR COORDINATION AND INSTALLATION OF WATER LINE AND METER WITH CITY OF LEWISBURG. CONTRACTOR SHALL NOTIFY LEWISBURG PUBLIC WORKS A MIN. 48 HOURS IN ADVANCE OF WHEN WORK SHOULD BE STARTED.
 D. CONTRACTOR TO PROVIDE CONCRETE THRUST BLOCKING ON ALL HORIZONTAL & VERTICAL BENDS AND TEES ON WATER MAIN.
 E. RELOCATION/ABANDONMENT OR DAMAGES TO EXISTING UTILITIES ENCOUNTERED DURING CONSTRUCTION IS THE RESPONSIBILITY OF THE CONTRACTOR.
 F. SEE OTHER DRAWING SHEETS FOR ASSOCIATED WORK AFFILIATED WITH UTILITY WORK.
 G. ALL YARD DRAINS (YD) SHOWN SHALL BE 18" DIAMETER NYLOPLAST DRAIN BASINS WITH STANDARD H-20 RATED ROUND CAST IRON FRAME & GRATE OR APPROVED EQUAL.

UTILITY CONTACTS
 ELECTRIC: AEP (FIRST ENERGY CORP.), CLINT DIXON, 304-647-7021 (200-7021)
 GAS: MOUNTAINEER GAS COMPANY, SHAUN CONLEY, 858-580-4427 EXT. 8602
 SANITARY: GREENBRIER PSD #1, LISA BENNETT, 304-445-8632
 WATER: CITY OF LEWISBURG, RICK JOHNSON, 304-667-9860

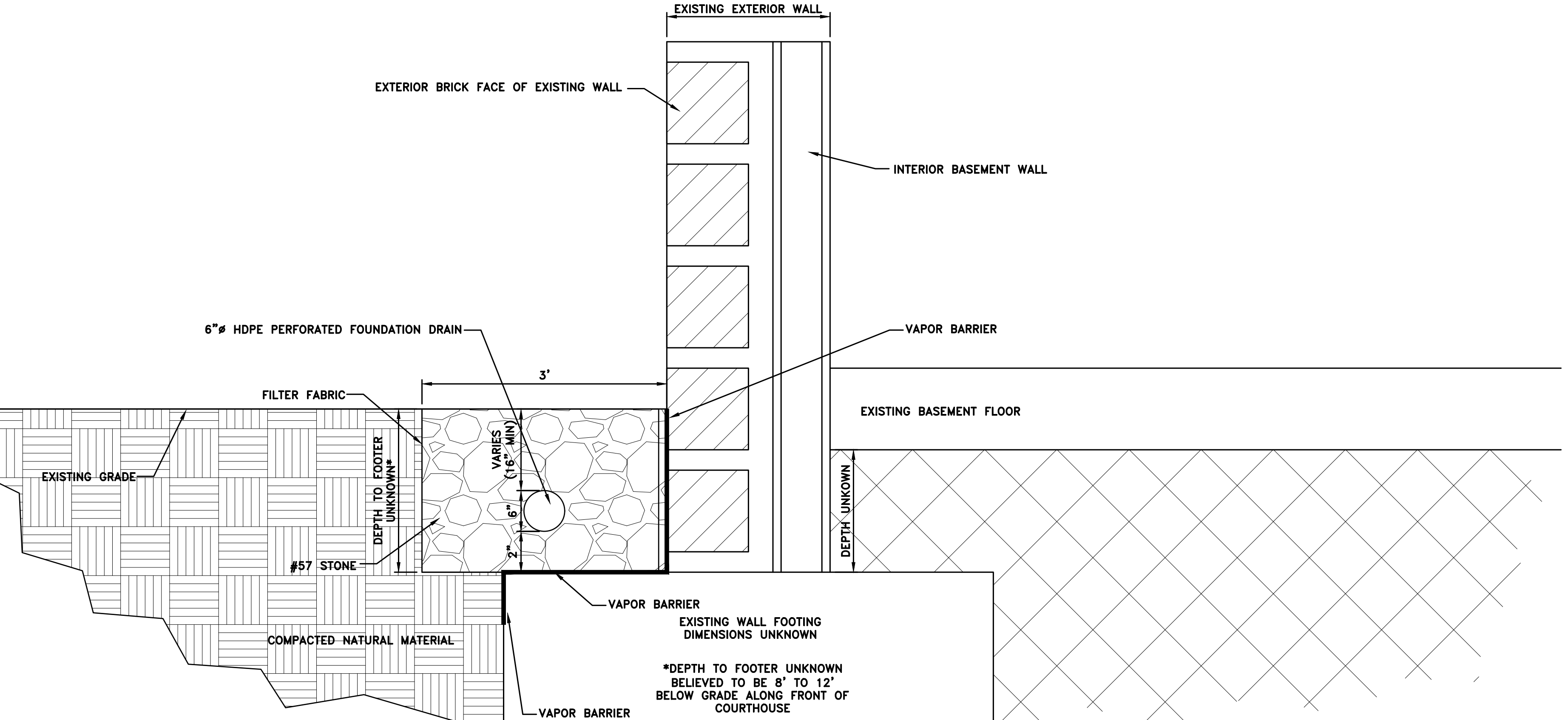
| Storm Event (YR) | Peak Stormwater Runoff to Ex Inlet #16 (cfs) |
|------------------|--|
| 1 | 0.5 |
| 2 | 0.59 |
| 5 | 0.71 |
| 10 | 0.79 |
| 25 | 0.9 |



ROOF DRAIN SPOUT DETAIL
 N.T.S.



STORM PIPE BEDDING DETAIL
 NOT TO SCALE (PIPE-BED-STORM.DWG)



FOUNDATION DRAIN DETAIL
 NOT TO SCALE

CONSTRUCTION SPECIFICATIONS SHALL BE IN ACCORDANCE WITH THE WEST VIRGINIA DEPARTMENT OF TRANSPORTATION DIVISION OF HIGHWAYS STANDARD SPECIFICATIONS ROADS AND BRIDGES, CURRENT EDITION.

TERRADON
 Engineering & Construction
 1000 75th Street
 Lewisburg, WV 24801
 (304) 752-8201
 www.terradon.com

DEMOLITION PLAN
 PROPOSED FOUNDATION DRAIN ALONG FRONT OF COURTHOUSE
 GREENBRIER COUNTY COMMISSION
 LEWISBURG, WEST VIRGINIA

Project No: 2002-0295-002
 Drawn: TERRADON
 Checked: KSM
 Scale: 1" = 20'
 Date: 11/28/2025
 Job No: 0295-002

C2